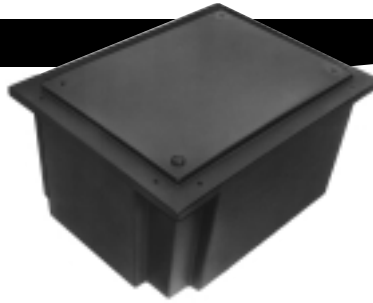
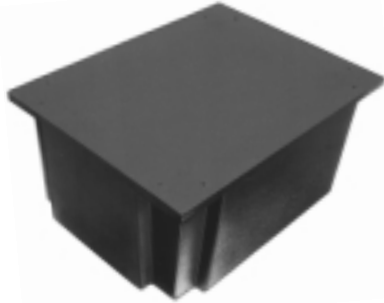


**RAISED TOP**



<i>model no.</i>	<i>material</i>	<i>Dimensions L x W x H</i>	<i>Max. Load (lbs.)</i>
63-8398-00	XLPE	48" x 36" x 14"	750
63-8398-01	LLDPE	48" x 36" x 14"	750
63-8600-00	XLPE	48" x 36" x 16"	850
63-8600-01	LLDPE	48" x 36" x 16"	850
63-8389-00	XLPE	48" x 36" x 20"	1070
63-8389-01	LLDPE	48" x 36" x 20"	1070

**FLAT TOP**



<i>model no.</i>	<i>material</i>	<i>Dimensions L x W x H</i>	<i>Max. Load (lbs.)</i>
63-8453-00	XLPE	48" x 36" x 14"	750
63-8453-01	LLDPE	48" x 36" x 14"	750
63-8599-00	XLPE	48" x 36" x 16"	850
63-8599-01	LLDPE	48" x 36" x 16"	850
63-8601-00	XLPE	48" x 36" x 20"	1070
63-8601-01	LLDPE	48" x 36" x 20"	1070

**Battery Boxes**

Battery boxes are molded of polyethylene which are acid-resistant and will not leak. Boxes come complete with hold-down hardware.

<i>part no.</i>	<i>battery</i>	<i>L x W x H</i>	<i>IDL</i>	<i>IDW</i>
61-4096	4D	25" x 12.75" x 11.50"	21.00	9.00
61-4097	8D	25" x 14.75" x 11.50"	21.00	11.50

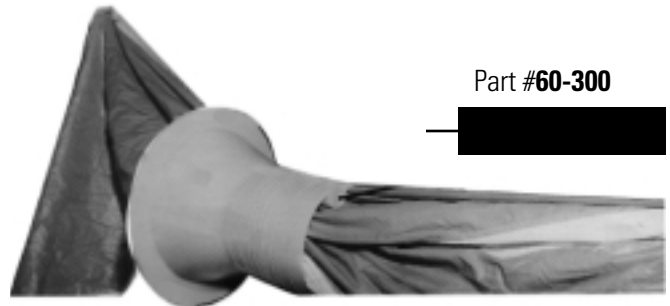
*Dimensions shown are overall.*



**Spinnaker Stopper**

Features include:

- Heavy duty, durable plastic. Will not collapse when fully loaded with rubber bands.
- Standard size #16 rubber bands are recommended for most applications.
- Bottom edge has wide flange for easy gripping.
- Deep groove for easy removal of rubber bands—finger or thumb slides under rubber bands.



Part #60-300

Easy to Use:

1. Load stopper by placing rubber bands (#16) on cylinder of stopper
2. Stretch out spinnaker and clear tapes.
3. Pull head of spinnaker through large end of stopper, holding tapes together at all times. As spinnaker is advanced through stopper, slide rubber bands on to spinnaker every 30 to 40 inches.